



Formica Younique® ✕ OKUDA SAN MIGUEL

June 2019

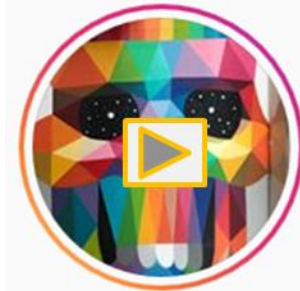


Okuda San Miguel



Spanish artist Okuda San Miguel is currently one of the most prominent contemporary muralists in the world.

- With more than 20 years of experience, his work in public spaces can be found in over **80 cities**, spanning **more than 30 countries**.
- His unique iconographic language, which uses geometric structures and multi-colored patterns and is present in cities throughout the world, has transformed him into one of today's most acclaimed artists.

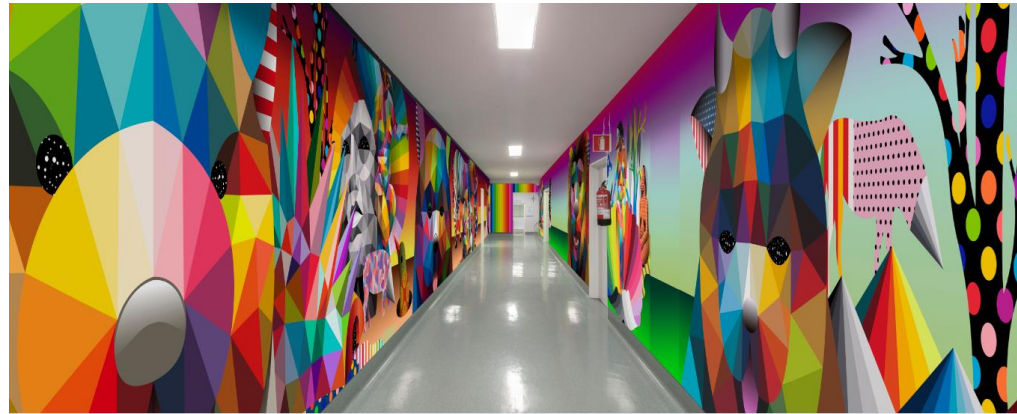
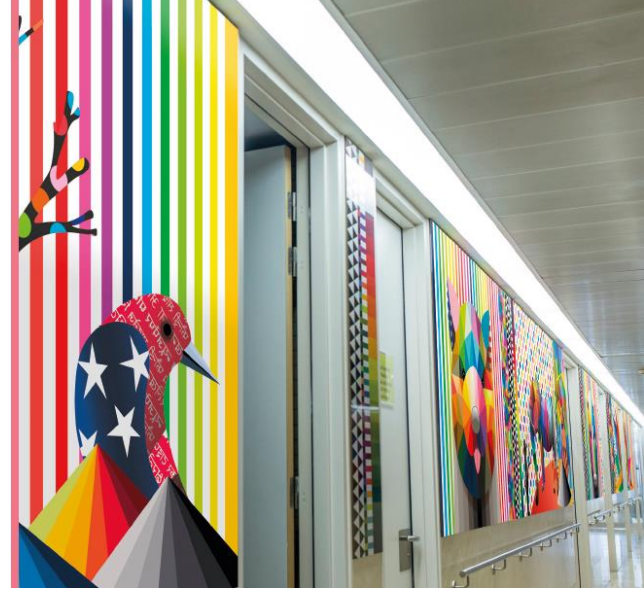


Check out!

Success Stories

Formica Group and Okuda San Miguel have already collaborated on two solidarity projects in Madrid, both of which aim to demonstrate the transformative power of art to the children and teenagers at the San Carlos and Gregorio Marañon hospitals.

With the artist's vision, we have been able to turn standard, monochromatic hospital rooms into spaces full of color, positive energy and optimism.



Introducing

Formica Younique® ✕ OKUDA SAN MIGUEL

A **limited-edition** line of laminates with **exclusive** designs by the artist, offering a **new type of collaboration between art, design and architecture.**

Art
Architecture



Introducing

Formica Younique®  OKUDA SAN MIGUEL

A **limited-edition** line of laminates with **exclusive** designs by the artist, offering a **new type of collaboration between art, design and architecture.**

Art
Architecture

You. Art. Younique.®



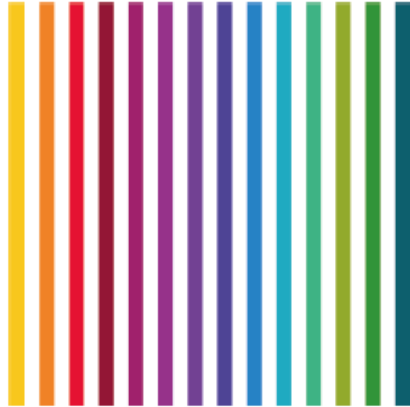
Check out!

Formica Younique® OKUDA SAN MIGUEL

Color Dots



Rainbow White



Multi-texture



Okuda Skin

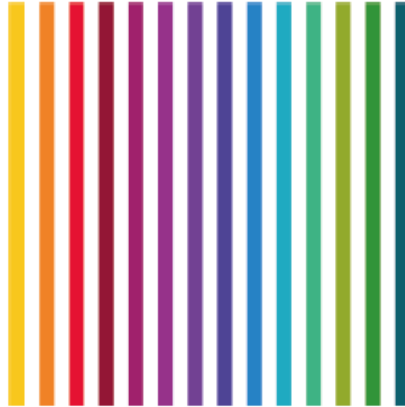
Four exclusive designs available in **three sizes (S, M, L)** which can be adapted to any **interior** project, ranging from large spaces to small applications.

Formica Younique® ✕ OKUDA SAN MIGUEL

Color Dots



Rainbow White



Multi-texture



Okuda Skin

Get to know the creative universe of Okuda San Miguel with our collection of patterns, and collaborate with the artist to think of new spaces.

Products made for you

Formica Younique® ✕ OKUDA SAN MIGUEL

In addition to granting you access to exclusive patterns, **Formica Younique® by Okuda San Miguel** allows you to create exclusive works of art completed by Okuda for your project.

A new concept
seeking collaboration between
art, design and architecture

Selling Terms & Conditions

Bestpoke

- Bestpoke design created by Okuda for a specific project
- **No limitations on sqm.**
- Valid for **interior and exterior applications**
- Application to **furniture** is **permitted**
- **PRICE** **≠** to be consulted for each project
- Available for sale till **September 2019**. Projects specified within this period will be valid till September 2020.



Do you want to be Younique®?

The artist's creativity and the way in which his work is able to transform spaces has led us to create the limited edition Formica Younique® by Okuda San Miguel line.

We invite you to be the one to design astonishing spaces in collaboration with Okuda San Miguel.

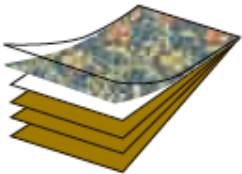
Technical information

This new product allows you to customize any space with the artist's characteristic designs, while also offering all of the high-performance properties and durability of Formica® laminate.

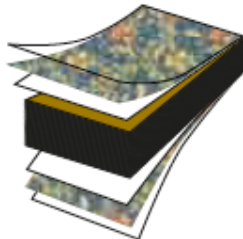
- Thermal resistance
- Moisture resistance
- Fire resistance
- Abrasion and scratch resistance
- Resistance to colour fading
- Ease of cleanliness and maintenance
- Cost effective with long life expectancy

A high quality, durable solution.

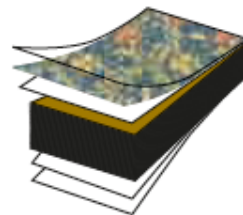
High Pressure Laminate
(for bonding to a substrate)



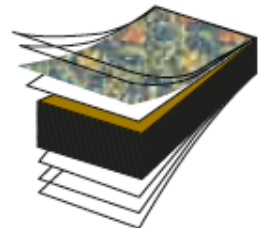
Compact Structural Laminate
(double sided)



Compact Structural Laminate
(single sided)



Exterior Compact Structural Laminate



Technical information

Size of the sheet (mm)	Maximum printing area
2150 x 950	2090 x 920
2350 x 1300	2290 x 1270
3050 x 1300	2990 x 1270
3600 x 1400*	3540 x 1370*

Sizes of finished boards and maximum printing areas are always centered in terms of length and width.

Grades	Description of grades	Thickness (mm)
HGS	Horizontal, General use, Standard	0,7 - 3
HGF	Horizontal, General use, Fireproof	0,7 - 3
CGS	Compact, General use, Standard	4 - 20
CGF	Compact, General use, Fireproof	4 - 20
EDS	For exteriors, Intense use, Standard	6, 8, 10

Surface Finishes

Description	Name	Code
Matte 58™	MAT	58
Gloss™*	GLS	90

*Only for interiors.
Other finishes may be available as custom orders.

Film Protector

Our laminates are always delivered with a film protector.